

**FLEX F1000DBL WITH LEVERS**  
**FLEX F1000DBR WITH REMOTE CONTROL**  
**CAPACITY 1000 KG – ELECTRIC CONTROLLED DOUBLE BOOM**



The electric counterbalanced crane FLEX F1000DB is a power driven counterbalanced crane with rigid arm and a max. lifting capacity of 1.000 kg. It is equipped with an electric controlled double telescopic jib arm that make it possible to get 2500 mm overhang. It is equipped with a pivoting drive wheel that offers an exceptional steering angle and two fixed front elastic wheels. The lifting, descent, extend and retract are electric powered and their speed can be adjusted by the operator. The integrated ballast design make it possible to lift a load without installing lateral outriggers. Therefore it is a universal mobile crane for unlimited applications and immediately ready for use. Our lifting equipment Flex F1000DB is ideal for placements of molds and various loads over barrier, on 3D machines, lathes, narrow openings, assembly lines and over perimeter protections. Equipped with 2 control levers or remote control that make it possible to activate the upward/downward motion of the jib arm as well as the extension and retraction with progressive speed. Handling and lifting of loads in full compliance with current health and safety regulations. The hydraulic system is equipped with a block valve that prevents the load from falling in case of accidental tube breakage. The pump is equipped with a relief valve that prevents the machine from being overloaded.

TECHNICAL DATA	UM	FLEX F1000DB
WEIGHT	[kg]	1600
MAX CAPACITY	[kg]	1000
LIFTING MOTOR	[W]	800
TRACTION MOTOR	[W]	1200
TANK CAPACITY	[L]	3

TRACTION AND CONTROLLER			
2 BATTERIES		1 BATTERY CHARGER	
[V]	[A]	[V]	[A]
2 x 12	2 x 120	24	12

## OUTREACH AND CAPACITY WITH ELECTRIC DOUBLE BOOM

<b>OUTREACH</b>	from 500 mm to 2500 mm
<b>CAPACITY</b>	from 1000 kg to 250 kg

### TILLER ARM

**Maximum ergonomics** : the operator can firmly grip the tiller handles with both hands

**Safe driving** : Tiller arm safety switch disables operation in non-allowed positions

**Slow/fast speed** : 2-speed driving

Slow mode of 1.5 km/hr ideal for tight spaces and to safely move the load

Standard speed of 3.0 km/hr to drive the crane along long distances

**Audible motion warning device** : Horn with anti-noise polyester axial capacitor

**Anti-crush belly button**: anti-crush button with automatic reversing switch to ensure the safety of the operator in every maneuvering operation

**2 butterfly controls**: for forward travel and backward travel controls



### BUILT-IN CHARGER

Pulse model with single phase 220V high frequency input voltage and 24V output voltage.

Microprocessor indicator with relay for lifting block.

3 LEDs that indicate the operating status.

Remote RBC indicator for displaying the charging phase of the battery charger.

Indicator that shows the charge level of the batteries

Indicator that shows the completion of the charging cycle

220V Schuko plug

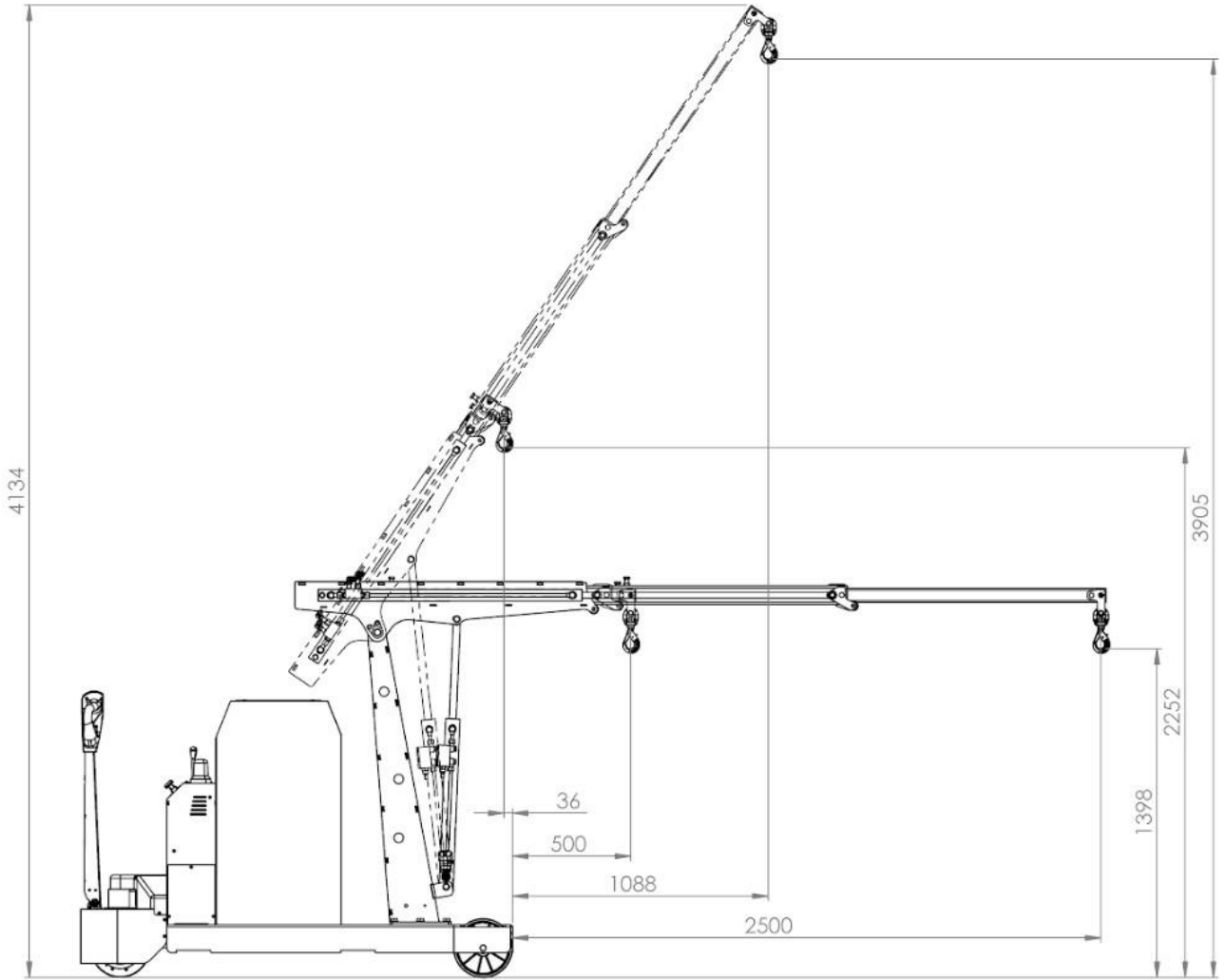
### DYNAMIC LOAD LIMITER

System for preventing overloading in each position of the extension that activates a mechanism that blocks the upward motion ensuring the functionality of the crane in absolute safety and that signals when the crane returns to allowed position, re-enabling the controls

### POWER DRIVE

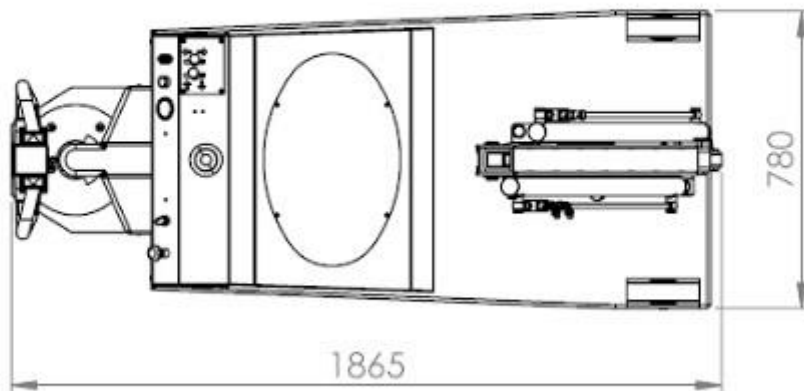
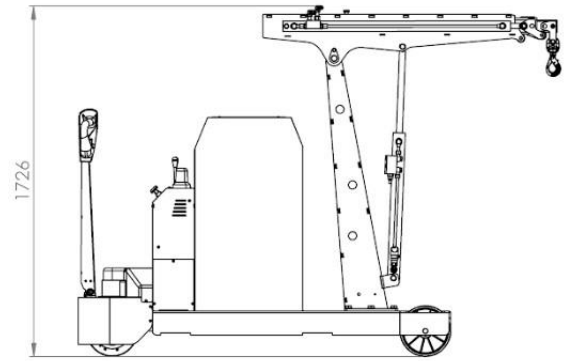
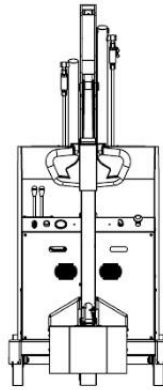
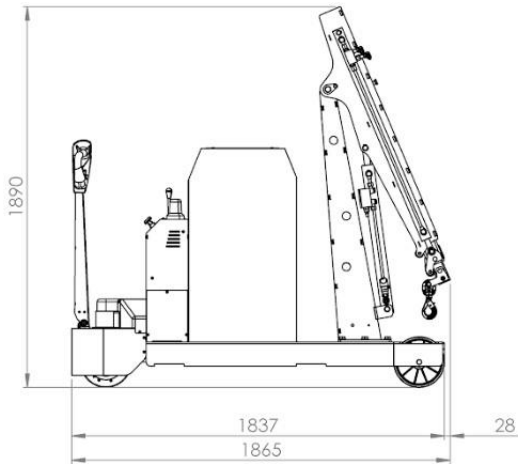
AC traction motor with recovery braking. Permanent magnet drive wheel in direct current 24V 700W high frequency MOSFET controller.

**FLEX F1000DBL / FLEX F1000DBR**  
**DRAWINGS**



# FLEX F1000DBL / FLEX F1000DBR

## DRAWINGS



# FLEX F1000DBL / FLEX F1000DBR

## LOAD CHART

